

Stamshaw Junior School

Be Kind. Do Your Best. Achieve Together.



Stamshaw Junior School

**Tipner Road
Portsmouth
PO2 8QH**

Enquiries to Mrs Amanda Smith

Headteacher: Mr Rob Jones

Deputy Headteacher: Mrs Sam Cantini

SEND Co-ordinator: Mrs Sam Cantini

DSL: Mr Rob Jones & Mrs Sam Cantini

Business Manager: Mrs Nina Glover

Finance Assistant: Miss Clare Giles

Site Manager: Mr Mike Bond

LGB Chair: Mrs Sherri Bailey

Tel: 02392 661045

E-mail: info@stamshawjun.org.uk

Website: www.stamshawjun.org.uk

Facebook: www.facebook.com/Stamshaw-Junior-School-100238674723954/

Twitter: [@Stamshawjun](https://twitter.com/Stamshawjun)

Stamshaw Junior School is sponsored by the University of Chichester Academy Trust

University of Chichester Academy Trust

Bognor Regis campus
Bognor Regis Road
Bognor Regis
West Sussex
PO21 1HR

E-mail: unicat@chi.ac.uk

Telephone: 01243 793500

Website: www.unicat.org.uk

Welcome to Stamshaw Junior School



On behalf of the whole school and the University of Chichester Academy Trust, I wish to welcome you to Stamshaw Junior School. I am very proud to be the Headteacher of this growing & improving school and look forward to working in partnership with you during your child's journey through the school.

Dedicated teachers and [staff](#) work relentlessly to provide our pupils with the very best learning opportunities and build strong relationships between home and school. We also share a [Governing Body](#) with [Stamshaw Infant School](#) with a focus on a smooth transition between schools.

We are a [values](#) led school which underpins all that we do at Stamshaw Junior School in order to be kind, do our best and achieve together. We have high expectations of work & [behaviour](#) and we aim to foster a life-long love of learning in our pupils and equip them with skills and attributes which will allow them to flourish both in school and beyond.

This [prospectus](#) is designed to give parents/carers information about the school, its aims, ethos, [policies](#), organisation and [curriculum](#).

More detailed information can be found on our school website www.stamshawjun.org.uk

Be Kind. Do Your Best. Achieve Together.

Best Wishes

Mr Rob Jones HDE, NPQH

Headteacher



Be Kind
Do Your Best
Achieve Together

Welcome from the Chair of our Local Governing Body

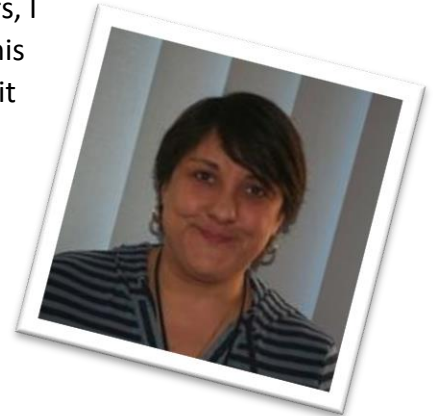
Thank you for your interest in Stamshaw Junior School. As Chair of Governors, I am immensely proud of the hard work that the Headteacher Rob Jones and his dedicated team have put into the school. I hope our prospectus and your visit to the school will give you a greater appreciation of what makes Stamshaw Junior School so special and show you how much it has to offer your child, both academically, and pastorally.

We have an excellent relationship with Stamshaw Infant School and whilst the schools are on different sites, they share the same Governing Body and support from the University of Chichester Academy Trust.

I sincerely hope that you choose to send your child to Stamshaw Junior School to experience its special nature first-hand.

Very best wishes to you and your child

Sherri Bailey



A Values Led School

At Stamshaw Junior School we have five values that underpin all that we do.

They include:

- Be Respectful
- Be Reliable
- Be Resourceful
- Be Resilient
- Be Reflective

These values are for everyone at our school including parents and carers.

By signing up to the five values we will achieve fantastic things at our fabulous school.

Be kind. Do your best. Achieve together.



Be Kind
Do Your Best
Achieve Together

Proud to be part of the University of Chichester Academy Trust

Stamshaw Junior School is a proud member of the University of Chichester Academy Trust.



As an academy, Stamshaw Junior School is a state-funded school working with other like-minded schools and the University of Chichester to provide an exceptional education experience for our pupils.

We remain guided by the national education framework but have greater freedom to make choices and share expertise and opportunities.

We support the Vision of the Trust 'for all young people to be inspired by an excellent education that raises their aspirations and enriches their lives' and its mission 'to create a vibrant inclusive and aspirational family of academies, transforming life chances for pupils through excellent teaching and learning.'

Our links to the University of Chichester

The University of Chichester Academy Trust is a Multi-Academy Trust (MAT) and aims to develop a family of c30 academies based on geographical groups in the region. Being part of the Trust provides Stamshaw Junior School with exciting opportunities to share expertise and resources with other academies as well as to access support from the University and from Trust professional staff.

Stamshaw Junior School benefits greatly from a continuing programme of curriculum support and enhancement provided by the Trust and expert colleagues from the University of Chichester.

The University's Institute of Education has a distinguished history of teacher training that goes back over 150 years and is noted for its professional learning programmes for teachers and high-quality education research. We provide teacher placements for trainee teachers and students enhance our curriculum offer by supporting art, PE, and music projects among other things.

Academy Governance

The University of Chichester Academy Trust is a single organisation with a Board of Trustees: its members are company directors and charity trustees and neither the Trust nor the University makes any profit from its academies.

The Board delegates day-to-day running of each academy to the [Local Governing Body](#) (LGB) which reports back to the Board. The level of delegation may be different for each academy. Enquiries about Stamshaw Junior School governance should be made in the first instance to the Chair of the LGB.



Curriculum

Teaching and Learning at Stamshaw

Through our teaching and learning we give our children the skills, knowledge and understanding necessary to be able to make informed choices about the important things in their lives. We believe that appropriate teaching and learning experiences help children to lead happy, safe and rewarding lives and prepare them for their future.

At Stamshaw Junior School we believe in lifelong learning and that learning should be a rewarding and enjoyable experience for everyone.

It should be **EPIC**

'**EPIC**' is what we like to see in our Teaching & Learning.

What does EPIC mean?

E= Excitement & Enjoyment: Lessons should be fun. They should involve hands on activities with practical resources to excite and engage the children in the purpose of the lesson.

P= Pace & Progress: To keep the lessons pacey, teachers should not give too many examples of 'how to' to the children but instead provide them with the opportunity to try for themselves, ensuring there is challenge and support available for all abilities. Clear routines and expectations need to be established so learning time is not lost during the lesson or activity change overs.

I= Included & Independence: Planning is suited to the different abilities of the children and additional adults are used to support working in smaller groups when appropriate. The learning that takes place should give opportunities for decision making and problem solving, while promoting the children thinking for themselves and provide times for them to work on their own.

C= Consistency & Challenge: Once new skills have been taught, the children need to be able to show their understanding by putting their learning into practise. Throughout the course of a lesson, high expectations will remain to ensure there is evidence of continued, good-quality work being produced, especially when it is presented in written form in a book.

Please take a look at the [Curriculum](#) page on our website



Attendance and Punctuality

We place great importance on attendance and monitor attendance daily. [Attendance](#) has a high profile within our school and we recognise and reward good and improved attendance regular and punctual attendance is essential for effective learning

- statistics show a direct link between under-achievement and attendance below 96%
- regular attenders make better progress, both socially and academically
- regular attenders find school routines, school work and friendships easier to cope with
- regular attenders find learning more satisfying
- regular attenders are more successful in transferring between primary school, secondary school, and higher education, employment or training

The School Day

Our school day is from 8.30am – 3.00pm

We have a Breakfast Club from 8:00am - £2 per session.

School gates open at 8.25am allowing children access to the playground

Registration is at 8:30am

At the end of the day the gates will open at 2.55pm to allow parents access to the playground.



Parent Access

We ask that all parents access the school via the front office. Any questions or queries or if you want to speak to your child's teacher must be done via the front office to ensure that we can keep all children safe and that we are aware of who is in the school building. Please also email your child's teacher. [Email addresses](#) can be found under ['Parents'](#) on our website

Holidays in Term Time

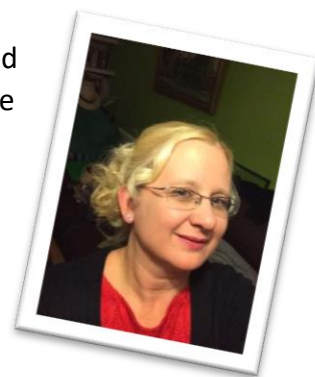
Headteachers may not grant any leave of absence during term time unless there are exceptional circumstances.

This means that we will not authorise leave of absence for family holidays during term time, unless we are satisfied that there are exceptional circumstances. Please ask at the school office for more information.



SEND

Mrs Sam Cantini is our SEND Coordinator and has a wealth of knowledge and experience with children with SEND. She is always available at the end of the phone, at the school gates or drop her an email for any support and advice. Please do look at our [SEND](#) page for further information.



SEND - What does that mean?

SEND stands for Special Educational Needs and Disabilities. Children with SEND often have a difficulty in at least one of the following four areas:

- Communication and Interaction e.g., Autism
- Cognition and Learning e.g., Dyslexia
- Social, Emotional and Mental Health e.g., Bipolar Disorder
- Sensory and/or Physical needs e.g., a Hearing Impairment



Uniform

We believe that a [school uniform](#) is important:

- It looks smart
- Wears well
- Contributes to a sense of belonging and community
- Gives a common purpose
- Makes children feel equal to their peers in terms of appearance
- Fosters a feeling of pride
- Is designed with health and safety in mind



We ask that all children wear the uniform and encourage them to maintain a good standard of clean and tidy dress in school.

UNIFORM

- Navy sweatshirt or cardigan
- White shirt or polo shirt
- Black or grey trousers or skirt
- Blue and white checked dress (summer)

P.E. KIT

- T-Shirt in House colour
- Plain shorts
- Trainers
- Plain tracksuit for winter
- No Football Kits

The uniform is designed to be practical, maintainable and good value for money.

Hair accessories such as slides, ribbons bobbles, etc, should be fairly simple and if possible, in school colours.

Parents are asked to ensure that all items are labelled clearly with their child's name.

For safety reasons we ask that the children do not wear jewellery in school.

For health reasons it is important that children are properly dressed for physical activity. PE kit should be kept in a named drawstring bag.

Uniform can be purchased on-line via the [School Trends](#) website and we hold a small stock in the school office.

Orders made through School Trends can be delivered to either your home or the school.

Delivery is £2.99 or free for orders over £75.

School Trends



Be Kind
Do Your Best
Achieve Together

School Meals

Our school meals are provided by [Caterlink](#) Ltd and cost £2.50 per day.



Here is an example of our lunch menu

You will find our current menu on the [School Meals](#) page of our website.

caterlink feeding the imagination		Monday	Tuesday	Wednesday	Thursday	Friday
Week One	Option 1	Chicken Curry with Rice 	Sausage, Mashed Potatoes and Gravy	Roast Chicken with Stuffing, Roast Potatoes and Gravy	French Bread Cheese & Tomato Pizza with Paprika Wedges	Fish Fingers with Chips
	Option 2	Macaroni Cheese 	Linda McCartney Sausages, Mashed Potatoes and Gravy 	Vegetable Wellington with Roast Potatoes and Gravy 	Lentil and Sweet Potato Curry with Rice	Cheese and Tomato Quiche with Chips
	Jacket Potato	Tuna Mayonnaise	Cheese	Tuna Mayonnaise	Baked Beans	Baked Beans
	Vegetables	Sweetcorn Cabbage	Cauliflower Broccoli	Carrots Green Beans	Roasted Vegetables	Baked Beans Peas
	Dessert	Apple Flapjack Yoghurt Fresh Fruit 	Pineapple Cake Yoghurt Fresh Fruit	Apple, Cheese & Crackers Yoghurt Fresh Fruit	Syrup Sponge with Custard Yoghurt Fresh Fruit	Fresh Fruit and Yoghurt Station
Week Two	Option 1	Mexican Beef with Rice 	Sausage Roll with Wedges	Roast Turkey Roast Potatoes and Gravy	Cheese and Tomato Pizza 	Fish Fingers with Chips
	Option 2	Soya Bolognaise 	Vegan Sausage Roll with Wedges 	Quorn Roast Fillet with Roast Potatoes and Gravy	Chickpea Curry with Rice 	Cheese Frittata with Chips
	Jacket Potato	Tuna Mayonnaise	Cheese	Baked Beans	Tuna Mayonnaise	Baked Beans
	Vegetables	Sweetcorn Broccoli	Peas Cauliflower	Carrots Green Beans	Sweetcorn Tomatoes	Baked Beans Peas
	Dessert	Orange and Lemon Shortbread Yoghurt Fresh Fruit 	Chocolate Cake with Chocolate Drizzle Yoghurt Fresh Fruit	Apple, Cheese and Crackers Yoghurt Fresh Fruit	Oaty Pear Crumble and Custard Yoghurt Fresh Fruit	Fresh Fruit and Yoghurt Station
Week Three	Option 1	Chicken Stir Fry with Rice	Chicken & Sweetcorn Pie with New Potatoes and Gravy	Roast Pork Roast Potatoes and Gravy	Cheese and Beef Pizza with Wedges 	Fish Fingers with Chips
	Option 2	Vegetarian Stir Fry with Rice	Vegetable Hotpot 	Macaroni Cheese	Cheese & Tomato Pizza With Wedges	Homemade Vegetable Sausage with Chips
	Jacket Potato	Baked Beans	Tuna Mayonnaise	Baked Beans	Tuna Mayonnaise	Cheese
	Vegetables	Green Beans Cauliflower	Swede and Carrot Mash	Carrots Peas	Sweetcorn Broccoli	Baked Beans Pea
	Dessert	Chocolate and Orange Brownie Yoghurt Fresh Fruit	Banana Sponge and Custard Yoghurt Fresh Fruit	Apple, Cheese and Crackers Yoghurt Fresh Fruit	Oaty Cookie Yoghurt Fresh Fruit 	Fresh Fruit and Yoghurt Station



Available Daily:

- Freshly cooked jacket potatoes with a choice of fillings (where advertised)
- Bread freshly baked on site daily
- Daily salad selection

ALLERGY INFORMATION:

If your child has an allergy or intolerance please ask a member of the catering team for information. If your child has a school lunch and has a food allergy or intolerance you will be asked to complete a form to ensure we have the necessary information to cater for your child. We use a large variety of ingredients in the preparation of our meals and due to the nature of our kitchens it is not possible to completely remove the risk of cross contamination.

Payments can be made online for school meals via [Scopay](#) or by visiting the School Office

You will need an **Online Access Code** to make online payments – Please contact the school office for information on accessing Scopay and your online access code. You can also make payments online for trips etc.

School Clubs

Breakfast Club

Our Breakfast Club is open every school day from 8:00am

Toast, Cereal & Juice provided

£2 per session – bookings are made via the School Office



After School Clubs

A variety of after school clubs are available each term at Stamshaw Junior School



As well as our Stamshaw Junior School Football Team









Visit the [After School Clubs](#) page on our website for clubs currently running

Communication

At Stamshaw Junior School we know the importance of communication with parents, carers and the wider community. We love to share upcoming events, the latest news, updates, letters home to parents and the amazing work the children of Stamshaw Junior produce. We do this by using Marvellous Me, text messages, emails, keeping our school website up to date and sharing on social media platforms such as Facebook and Twitter. We also have a YouTube channel.

See details below and follow us!

<p>School Website</p>  <p>www.stamshawjun.org.uk</p>	<p>Facebook</p>  <p>facebook.com/Stamshaw-Junior-School-100238674723954/</p>
<p>Twitter</p>  <p>twitter.com/Stamshawjun</p>	<p>YouTube</p>  <p>www.youtube.com/channel/UCLTVJdxSbHXrHMOVTDzge8g</p>
<p>Marvellous Me</p>  <p>We use Marvellous Me to share wonderful news with parents and engage them in their children's learning and development</p>	<p>Email Your Teachers</p>  <p>You can also email your child's class teacher directly. Contact the school office or see our website's Class Emails page for email addresses</p>